

Bear.	Dist.	N.	S.	E.	W.	D.M.D.	N. Areas.	S. Areas.
S. 89 E.	66.00		1.15	65.99		65.99		75.8885
S. 17 E.	89.00		85.11	26.02		158.00		13447.3800
N. 89 W.	78.00	1.29			77.95	106.07	136.8303	
N. 17 W.	30.00	28.69			8.77	19.35	555.1515	
N. 9 E.	26.00	25.68		4.07		14.65	377.2120	
N. 17 W.	32.00	30.60			9.36	9.36	286.4160	

86.26 86.26 96.08 96.08

1355.6098

13523.2685

1355.6098

2) 12167.6587

169.6) 6083.8 (35 as

5088

9958

8480

106) 147.8 (139 ps

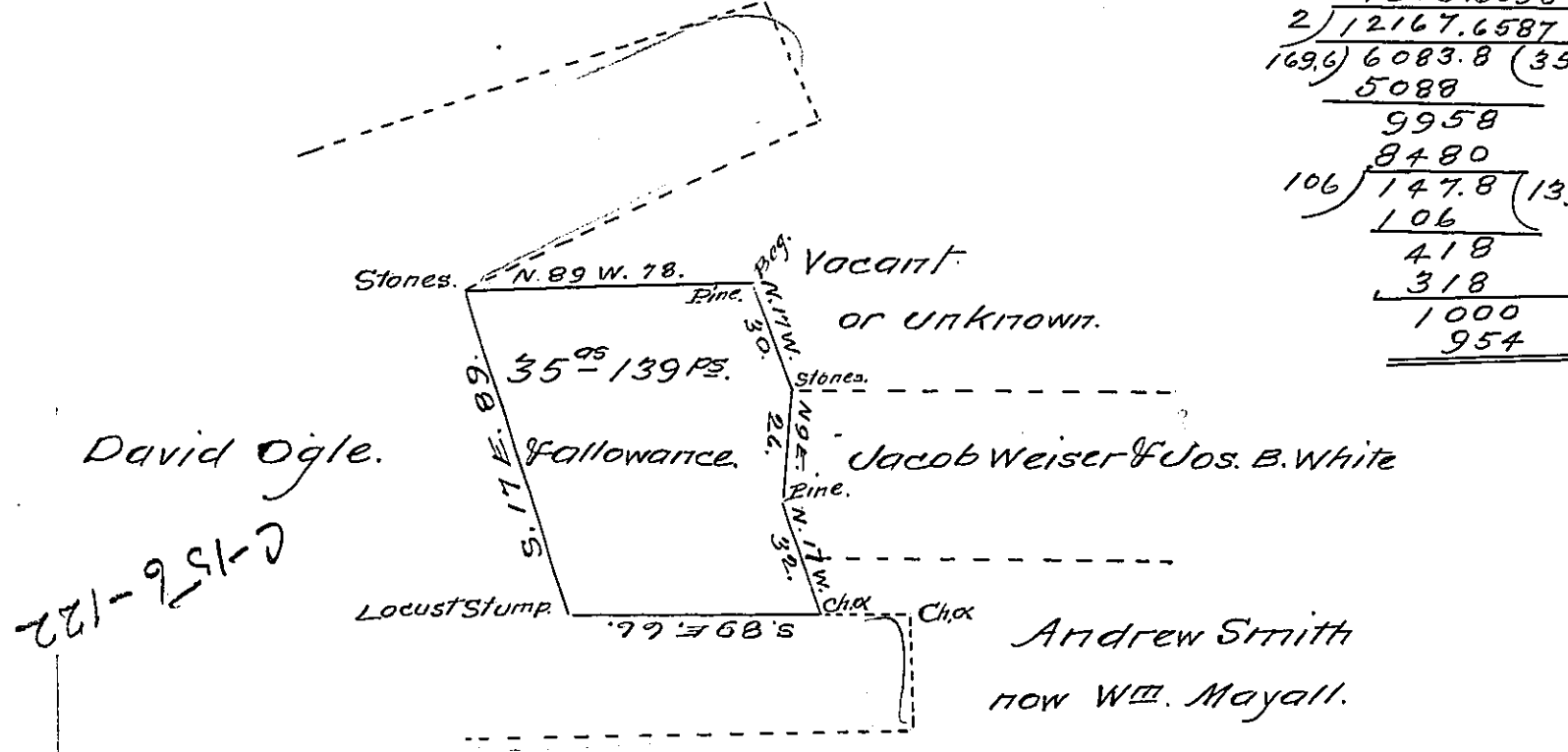
106

418

318

1000

954



A draft of a tract of land situated in Penn Township Perry County Containing thirty five acres, one hundred and thirty nine perches and allowance, Surveyed April 27th. 1868, in pursuance of a Warrant granted Jacob Smith April 11th. 1868 for 70 acres.

M. B. Holman
County Surveyor

To J. M. Campbell Esq.
Surveyor General.

IN TESTIMONY that the above is a copy of the original remaining on file in the Department of Internal Affairs of Pennsylvania, made conformably to an Act of Assembly approved the 16th day of February, 1833, I have hereunto set my Hand and caused the Seal of said Department to be affixed at Harrisburg, this twelfth day of September 1907.

Harry Rowlett
Secretary of Internal Affairs.